



8 Western Park

CW11 4NW

£135,000



2



2



1



STEPHENSON BROWNE

Fantastic opportunity to purchase this OVER 50s beautiful park home in the heart of Winterley. With large room sizes and both front and rear gardens, this stunning home needs to be seen to be fully appreciated.

Agents Remarks

Absolutely stunning OVER 50s park home property close to the centre of picturesque Haslington. Tastefully decorated throughout, this large park home would be ideal for those looking to downsize into a beautifully presented bungalow style property.

In brief the property comprises; entrance hallway, large lounge/diner, kitchen, bathroom and two double bedroom's, master with en suite and dressing room. Externally there is a garden and driveway to the front of the property and a communal garden, patio area and garden shed to the rear.

Offering immaculate modern accommodation in an ideal location and NO ONWARD CHAIN, a viewing is absolutely essential to appreciate this home.

Location

ACCOMMODATION

Entrance Hallway

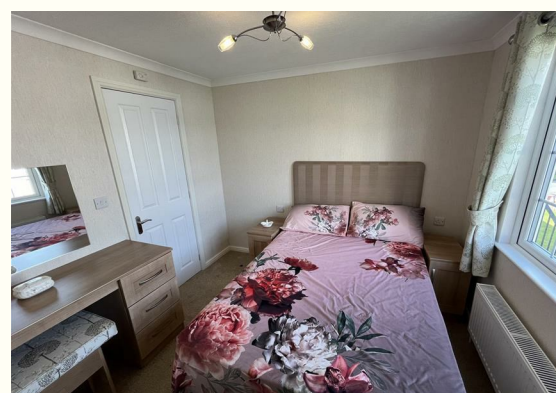
Two ceiling light points, radiator, smoke alarm, two storage cupboards.

Lounge/Diner

16'6" x 10'7" to the maximum (5.049 x 3.241 to the maximum)

Three ceiling light points, three radiators, tv point, gas fire with wooden (acrylic) surround, three UPVC double glazes windows to the front and side elevation





Kitchen

9'3" x 11'10" (2.830 x 3.622)

Good range of white wall and base units with wooden work surface over, integrated fridge freezer, integrated oven with gas hob and extractor fan over, integrated dishwasher, stainless steel sink with mixer tap over, UPVC double glazed window to rear elevation, UPVC double glazed door with frosted panels to rear elevation, storage cupboard housing Potterton combination boiler, ceiling light point, wood effect vinyl flooring, radiator.

Bedroom One

9'3" x 8'6" (2.830 x 2.591)

Ceiling light point, radiator, UPVC double glazed window to rear elevation.

Walk-in Wardrobe

4'0" x 5'3" (1.244 x 1.610)

Ceiling light point, built in storage.

En Suite

Low level WC, pedestal wash hand basin with storage unit, UPVC double glazed frosted window to side elevation, ceiling light point, extractor fan, walk in shower enclosure with electric mixer shower over, radiator.

Bedroom Two

9'3" x 9'2" to the maximum (2.825 x 2.803 to the maximum)

Ceiling light point, radiator, UPVC double glazed bay window to front elevation, wood effect vinyl flooring.

Bathroom

Low level WC, pedestal wash hand basin with storage unit, panel bath with mixer tap, wood effect vinyl flooring.

OUTSIDE

Front

Laid to lawn area, steps leading up to property, small shrubbery area, driveway.

Rear

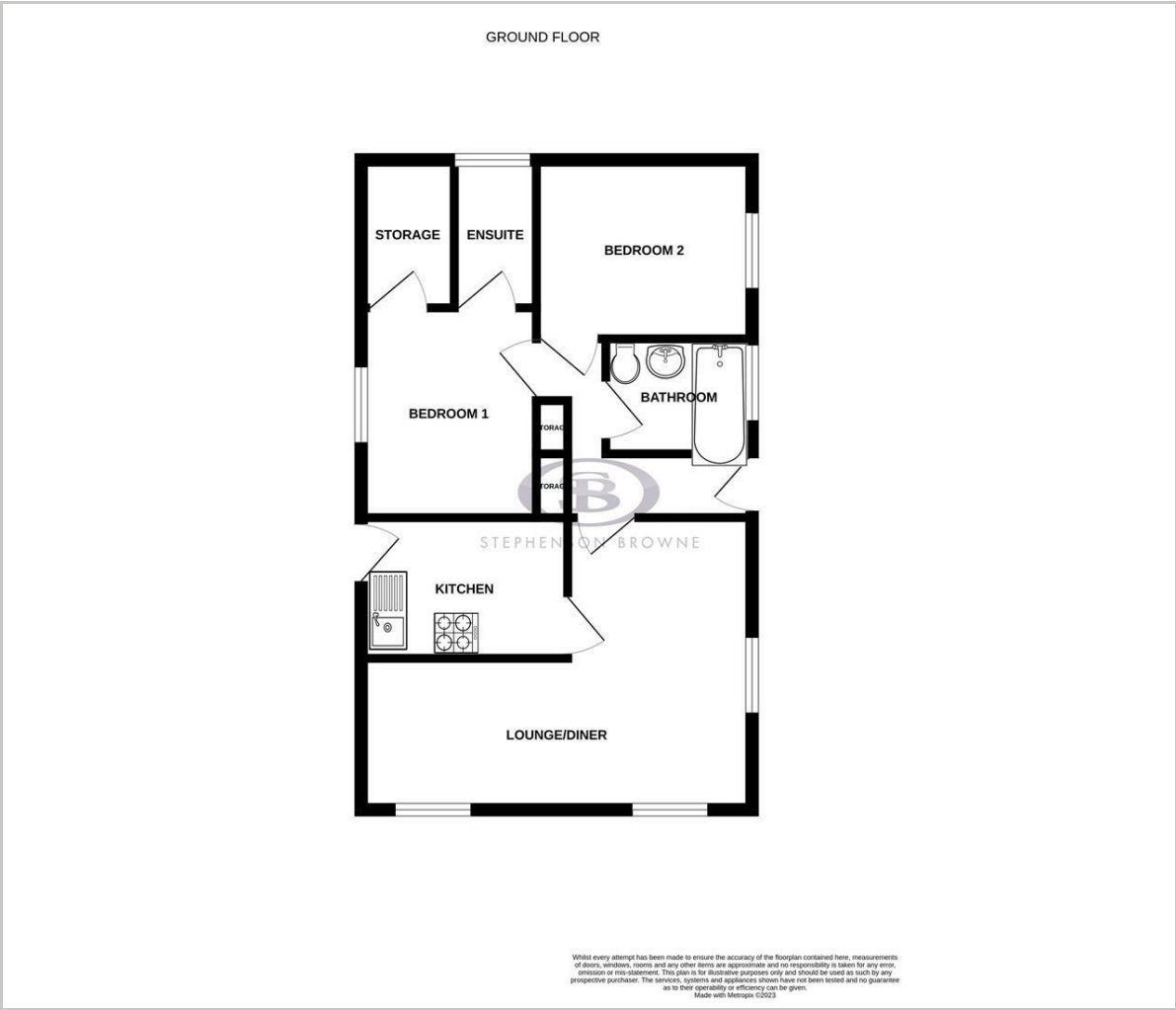
Patio area, communal garden, garden shed.

Service Charge

£152.17pcm



Floor Plan



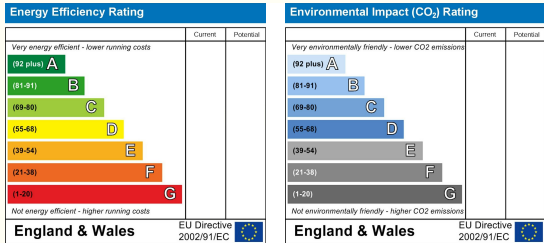
Viewing

Please contact our Sandbach Office on 01270 763200 if you wish to arrange a viewing appointment for this property or require further information.

Area Map



Energy Efficiency Graph



NOTICE: Stephenson Browne for themselves and for the vendors or lessors of this property whose agents they are give notice that: (1) the particulars are set out as a general guideline only for the guidance of intending purchasers or lessees, and do not constitute, nor constitute part of, an offer or contract; (2) all descriptions, dimensions, references to condition and necessary permissions for use and occupation, and other details are given in good faith and are believed to be correct but any intending purchasers or tenants should not rely on them as statements or representations of fact but must satisfy themselves by inspection or otherwise as to the correctness of each theme; (3) no person in the employment of Stephenson Browne has any authority to make representation or warranty whatever in relation to this property. (4) fixtures & fittings are subject to a formal list supplied by the vendors solicitors. **Referring to:** Move with Us Ltd **Average Fee:** £123.64

38 High Street, Sandbach, CW11 1AN

T: 01270 763200 E: sandbach@stephensonbrowne.co.uk | www.stephensonbrowne.co.uk